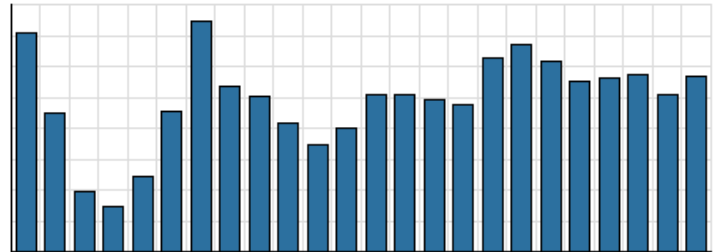


Monthly Stats Brief Narrative

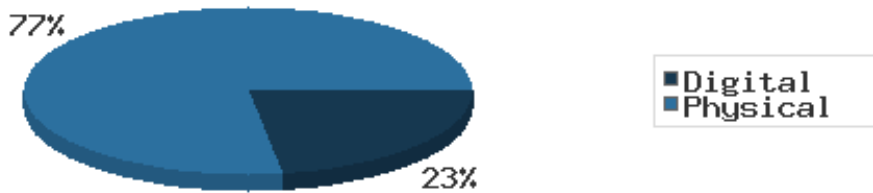
Through January 2022, the number of patrons entering our buildings greatly increased system-wide compared to this same time year-to-date the previous year. Combined physical and digital use of library materials greatly increased year-to-date compared to 2021. About 7% of our registered cardholders checked out a physical item this past month, while about 3% of registered cardholders checked out a digital item.

District Total Checkouts Over 24 Months



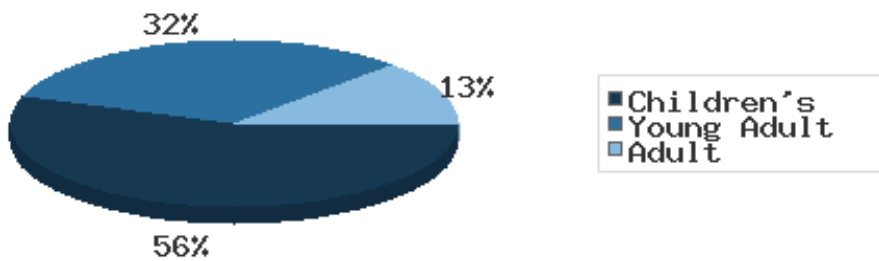
Digital usage has comprised about 23% of total materials use year-to-date through January 2022, and digital usage slightly increased from this time in 2021.

Digital vs. Physical Circulation YTD



In January 2022, BDL patrons saved \$101,387.70 by checking out 8,774 physical items from the library. Our programming for all ages and our digital services further increase the library's value to the community, bringing the total estimated value to \$122,291.78.

Programs Offered in 2022 YTD



Compared to this time year-to-date 2021, the number of programs BDL offered has greatly increased. Attendance at programs increased over this same period.

See the full statistical report, starting on the next page, for details and more graphs. The most up-to-date stats are always available online and interactive at <https://www.BranchDistrictLibrary.org/stats>.

Attendance

January 2022

	BDL Monthly Total	BDL YTD	BDL Year End (Year-over-Year Change)				
			2021	2020	2019	2018	2017
Attendance	6,754	6,754 (+274%)	76,553 (+21%)	63,336 (-66%)	183,677 (-4%)	191,866 (-1%)	193,922 (-4%)
Curbside Service Uses (Tracking since 2020)	10	10	14	0	0	0	0
Hours Open	744.50	744.50 (+87%)	10,569.00 (+48%)	7,132.50 (-37%)	11,250.25 (-9%)	12,387.00 (+14%)	10,869.15 (0%)
Number of Hours Scheduled Open Each Week (Tracking Since 1/2018)	239.00		239.00 (+1%)	237.00 (-2%)	241.00 (-2%)	245.00	0.00

Patrons

January 2022

	BDL Monthly Total	BDL YTD	BDL Year End (Year-over-Year Change)				
			2021	2020	2019	2018	2017
Population in our Service Area (Tracking Since 2018)	44,959	44,959 (avg) (+0%)	44,996 (avg) (+0%)	44,931 (avg) (0%)	45,093 (avg) (0%)	45,113 (avg)	0 (avg)
Library Card Holders	22,835	22,835 (avg) (+4%)	22,337 (avg) (+5%)	21,365 (avg) (+4%)	20,493 (avg) (-4%)	21,350 (avg) (-16%)	25,346 (avg) (+3%)
Patrons Who Checked Out a Physical Item	1,511	1,511 (avg) (+60%)	1,359 (avg) (+23%)	1,102 (avg) (-48%)	2,136 (avg) (-2%)	2,180 (avg) (-5%)	2,305 (avg) (-1%)
New Library Card Holders Added	62	62 (+226%)	732 (-44%)	1,304 (+111%)	618 (-39%)	1,021 (+21%)	844 (-15%)
In-House Holds Filled for Our Library Card Holders	945	945 (-34%)	10,696 (+13%)	9,467 (-10%)	10,527 (-4%)	10,987 (-6%)	11,650 (+12%)
Active Hoopla Users	321	321 (avg) (0%)	291 (avg) (-10%)	322 (avg) (+11%)	290 (avg) (+14%)	255 (avg) (+50%)	170 (avg) (+92%)
Active OverDrive Users	255	255 (avg) (+11%)	223 (avg) (-5%)	234 (avg) (+10%)	213 (avg) (+18%)	180 (avg) (+27%)	143 (avg) (-1%)

Physical Collection

Tracking Item-Type Breakdown Since 8/2017

January 2022

	BDL Monthly Total	BDL YTD	BDL Year End (Year-over-Year Change)				
			2021	2020	2019	2018	2017
Physical Books and All other Print Materials in the Catalog	92,092		91,417 (+0%)	91,278 (-8%)	98,689 (-2%)	100,253 (0%)	100,293
Physical Audiobooks in the Catalog	1,884		1,875 (-4%)	1,949 (+9%)	1,783 (-5%)	1,881 (+2%)	1,852
Physical Video Materials in the Catalog	11,729		11,646 (+3%)	11,352 (-1%)	11,460 (+8%)	10,579 (+1%)	10,519
Physical Music Recordings in the Catalog	42		42 (-76%)	178 (+12%)	159 (-53%)	337 (-2%)	345
TOTAL Physical Items in the Catalog	105,747		104,980 (0%)	105,257 (-6%)	112,053 (-1%)	113,050 (+0%)	113,009 (-11%)

Digital Collection

Tracking Since 8/2017

January 2022

	BDL Monthly Total	BDL YTD	BDL Year End (Year-over-Year Change)				
			2021	2020	2019	2018	2017
Ebooks in All Digital Collections	655,325		648,146 (+35%)	480,691 (+30%)	370,666 (+21%)	306,595 (+33%)	230,178
Audiobooks in All Digital Collections	164,081		162,946 (+26%)	128,892 (+50%)	86,004 (+19%)	71,995 (+36%)	52,833
Video Materials in All Digital Collections	23,373		22,520 (+27%)	17,791 (+9%)	16,267 (+14%)	14,229 (-10%)	15,767
Music Recordings in All Digital Collections	295,769		21,347 (-92%)	273,294 (+1%)	271,614 (+13%)	239,705 (-14%)	280,259
Periodicals in All Digital Collections	3,988		3,881 (+6%)	3,668	0	0	0
TOTAL of All Digital Collections	1,142,536		858,840 (-5%)	904,336 (+21%)	744,551 (+18%)	632,524 (+9%)	579,037

Total Collection

Tracking Since 8/2017

January 2022

	BDL Monthly Total	BDL YTD	BDL Year End (Year-over-Year Change)				
			2021	2020	2019	2018	2017
Combined Physical Items	105,747		104,980 (0%)	105,257 (-6%)	112,053 (-1%)	113,050 (+0%)	113,009 (-11%)
Combined Digital Collections	1,142,536		858,840 (-5%)	904,336 (+21%)	744,551 (+18%)	632,524 (+9%)	579,037
TOTAL of all Collections	1,244,295		959,939 (-5%)	1,009,593 (+18%)	856,604 (+15%)	745,574 (+8%)	692,046 (+447%)

Use of Physical Items

January 2022

	BDL Monthly Total	BDL YTD	BDL Year End (Year-over-Year Change)				
			2021	2020	2019	2018	2017
Checkouts of Cataloged Items	6,372	6,372 (+72%)	68,460 (+31%)	52,227 (-53%)	110,285 (-3%)	113,128 (-6%)	120,916 (+2%)
Renewals of Cataloged Items	783	783 (+31%)	8,639 (+20%)	7,181 (-47%)	13,490 (-1%)	13,607 (-8%)	14,804 (-4%)
Items Used in the Library But Not Checked Out	264	264 (+47%)	2,350 (-63%)	6,404 (+54%)	4,166 (+49%)	2,803 (-8%)	3,050 (+126%)
Checkouts of Uncataloged Items	128	128 (+198%)	1,505 (+50%)	1,001 (-70%)	3,294 (-16%)	3,904 (+38%)	2,839 (-38%)
Requests from BDL Patrons for Items at Other MeLCat Libraries, Actually Fulfilled	636	636 (+12%)	6,981 (+52%)	4,599 (-53%)	9,873 (+1%)	9,777 (+20%)	8,169 (+15%)
Requests from Other MeLCat Libraries for Items at BDL, Actually Fulfilled	591	591 (+45%)	5,712 (+80%)	3,175 (-58%)	7,582 (-23%)	9,810 (+25%)	7,867 (+11%)
TOTAL Use of Physical Items	8,774	8,774 (+60%)	93,647 (+26%)	74,587 (-50%)	148,690 (-3%)	153,029 (-3%)	157,645 (+2%)

Use of Digital Resources

January 2022

	BDL Monthly Total	BDL YTD	BDL Year End (Year-over-Year Change)				
			2021	2020	2019	2018	2017
OverDrive Checkouts	1,230	1,230 (+17%)	13,294 (+2%)	13,051 (+21%)	10,822 (+14%)	9,501 (+21%)	7,823 (+4%)
Hoopla Checkouts	1,081	1,081 (-2%)	12,507 (-8%)	13,604 (+9%)	12,530 (-2%)	12,796 (+20%)	10,669 (+96%)
All Other Digital Services	273	273 (+26%)	10,131 (+42%)	7,140 (-33%)	10,604 (+11%)	9,572 (-72%)	34,047 (-46%)
TOTAL Use of Digital Resources	2,584	2,584 (+4%)	36,284 (+4%)	34,861 (+3%)	33,956 (+7%)	31,869 (-39%)	52,539 (-31%)

Total Item Usage

January 2022

	BDL Monthly Total	BDL YTD	BDL Year End (Year-over-Year Change)				
			2021	2020	2019	2018	2017
Combined Checkouts of Physical Items	8,774	8,774 (+60%)	93,647 (+26%)	74,587 (-50%)	148,690 (-3%)	153,029 (-3%)	157,645 (+2%)
Combined Use of Digital Resources	2,584	2,584 (+4%)	36,284 (+4%)	34,861 (+3%)	33,956 (+7%)	31,869 (-39%)	52,539 (-31%)
TOTAL Uses of All BDL Items	11,358	11,358 (+42%)	129,931 (+19%)	109,448 (-40%)	182,646 (-1%)	184,898 (-12%)	210,184 (-9%)

Cataloging

January 2022

	BDL Monthly Total	BDL YTD	BDL Year End (Year-over-Year Change)				
			2021	2020	2019	2018	2017
Physical Items Added to the Catalog	814	814 (-16%)	11,665 (+17%)	9,938 (+2%)	9,719 (-12%)	11,056 (+0%)	11,009 (-1%)
Physical Items Deleted from the Catalog	46	46 (-98%)	16,482 (-3%)	17,003 (+58%)	10,769 (-2%)	10,941 (-55%)	24,366 (+53%)

Reference Questions

January 2022

	BDL Monthly Total	BDL YTD	BDL Year End (Year-over-Year Change)				
			2021	2020	2019	2018	2017
General Reference Questions in Person	751	751 (+98%)	8,431 (+94%)	4,347 (-50%)	8,748 (+32%)	6,641 (-12%)	7,537 (+20%)
Questions via Telephone Calls	474	474 (-34%)	5,765 (+26%)	4,559 (+11%)	4,111 (+6%)	3,866 (-24%)	5,079 (+10%)
Reference Questions Delivered Online	26	26 (-35%)	275 (+13%)	243 (-14%)	281 (+85%)	152 (-35%)	233 (-23%)
In-Person Questions on Computer or Internet Use	265	265 (+87%)	3,675 (+33%)	2,767 (-63%)	7,505 (+6%)	7,068 (-3%)	7,285 (+11%)
In-Person Questions about Our Online Databases	7	7 (-56%)	142 (+33%)	107 (-69%)	349 (-15%)	409 (+13%)	363 (+114%)
In-Person Tax Form Questions	41	41 (-25%)	233 (-19%)	286 (-12%)	326 (-37%)	518 (+5%)	493 (+4%)
TOTAL of All Reference Questions	1,564	1,564 (+16%)	18,521 (+50%)	12,309 (-42%)	21,320 (+14%)	18,654 (-11%)	20,990 (+14%)

Notary Services

Began 9/2017

January 2022

	BDL Monthly Total	BDL YTD	BDL Year End (Year-over-Year Change)				
			2021	2020	2019	2018	2017
Patrons Who Used our Free Notary Services	5	5 (+150%)	69 (+50%)	46 (-52%)	95 (+44%)	66 (+371%)	14
Documents Notarized	7	7 (+250%)	112 (+107%)	54 (-56%)	124 (+85%)	67 (+253%)	19

MeLCat

January 2022

	BDL Monthly Total	BDL YTD	BDL Year End (Year-over-Year Change)				
			2021	2020	2019	2018	2017
Requests from BDL Patrons for Items at Other MeLCat Libraries	675	675 (+10%)	7,375 (+47%)	5,026 (-52%)	10,538 (+1%)	10,462 (+20%)	8,699 (+14%)
Requests from BDL Patrons for Items at Other MeLCat Libraries, Actually Fulfilled	636	636 (+12%)	6,981 (+52%)	4,599 (-53%)	9,873 (+1%)	9,777 (+20%)	8,169 (+15%)
Requests from Other MeLCat Libraries for Items at BDL	569	569 (+19%)	6,067 (+49%)	4,067 (-52%)	8,405 (-18%)	10,296 (+29%)	7,994 (+13%)
Requests from Other MeLCat Libraries for Items at BDL, Actually Fulfilled	591	591 (+45%)	5,712 (+80%)	3,175 (-58%)	7,582 (-23%)	9,810 (+25%)	7,867 (+11%)

Programs Held

January 2022

	BDL Monthly Total	BDL YTD	BDL Year End (Year-over-Year Change)				
			2021	2020	2019	2018	2017
Early Childhood Literacy Programs Held (Tracking since 2021)	24	24 (+300%)	116	0	0	0	0
Juvenile Programs Held	49	49 (+88%)	290 (-47%)	551 (-31%)	804 (+10%)	730 (+1%)	720 (+19%)
Young Adult Programs Held	28	28 (+211%)	131 (-5%)	138 (-55%)	304 (-10%)	338 (+41%)	239 (+47%)
Adult Programs Held	11	11 (+57%)	114 (-56%)	257 (+54%)	167 (+23%)	136 (-7%)	146 (-34%)
All-Ages Programs Held (Tracking since 2021)	6	6 (+100%)	80	0	0	0	0
Early Childhood Literacy Summer Reading Programs Held (Tracking since 2021)	0	0	9	0	0	0	0
Juvenile Summer Reading Events Held	0	0	96	0	173 (+52%)	114 (+20%)	95 (+7%)
Young Adult Summer Reading Events Held	0	0	25	0	61 (+24%)	49 (-14%)	57 (+97%)
Adult Summer Reading Events Held	0	0	27	0	17 (+467%)	3	0
All-Ages Summer Reading Programs Held (Tracking since 2021)	0	0	26	0	0	0	0
Computer Classes Held	0	0	1	1 (-99%)	81 (+305%)	20 (-9%)	22 (+57%)
TOTAL of All Programs	118	118 (+131%)	1,636 (+73%)	947 (-41%)	1,607 (+16%)	1,390 (+9%)	1,279 (+14%)

Program Attendance

January 2022

	BDL Monthly Total	BDL YTD	BDL Year End (Year-over-Year Change)				
			2021	2020	2019	2018	2017
Attendees at Early Childhood Literacy Programs (Tracking since 2021)	125	125 (+28%)	1,389	0	0	0	0
Attendees at Juvenile Programs	420	420 (+47%)	4,270 (-83%)	25,317 (+73%)	14,654 (-7%)	15,725 (+2%)	15,351 (+48%)
Attendees at Young Adult Programs	95	95 (+42%)	817 (-75%)	3,204 (+29%)	2,489 (-23%)	3,218 (-15%)	3,806 (+276%)
Attendees at Adult Programs	59	59 (-13%)	1,971 (-88%)	16,263 (+519%)	2,627 (+33%)	1,970 (0%)	1,979 (-3%)
Attendees at All-Ages Programs (Tracking since 2021)	54	54 (-67%)	4,547	0	0	0	0
Attendees at Early Childhood Literacy Summer Reading Programs (Tracking since 2021)	0	0	146	0	0	0	0
Attendees at Juvenile Summer Reading Events	0	0	1,798	0	4,186 (+8%)	3,864 (+24%)	3,116 (-20%)
Attendees at Young Adult Summer Reading Events	0	0	181	0	279 (-16%)	333 (-50%)	671 (+127%)
Attendees at Adult Summer Reading Events	0	0	179	0	310 (+265%)	85	0
Attendees at All-Ages Summer Programs (Tracking since 2021)	0	0	730	0	0	0	0
Attendees at Computer Classes	0	0	1	0	26 (+30%)	20 (-5%)	21 (+75%)
TOTAL of All Program Attendance	753	753 (+10%)	16,029 (-64%)	44,784 (+82%)	24,571 (-3%)	25,215 (+1%)	24,944 (+41%)

Summer Reading Overview

January 2022

	BDL Monthly Total	BDL YTD	BDL Year End (Year-over-Year Change)				
			2021	2020	2019	2018	2017
Juveniles Signed Up for Summer Reading Program	0	0	407 (+347%)	91 (-87%)	711 (-5%)	747 (-35%)	1,153 (+19%)
Young Adults Signed up for Summer Reading Program	0	0	77 (+166%)	29 (-78%)	134 (-65%)	378 (-2%)	385 (+241%)
Adults Signed Up for Summer Reading Program	0	0	122 (+270%)	33 (-79%)	159 (-36%)	248 (+112%)	117 (+36%)
Juveniles who Completed Summer Reading Program	0	0	220 (+142%)	91 (-76%)	385 (+48%)	260 (-50%)	518 (+13%)
Young Adults who Completed Summer Reading Program	0	0	38 (+31%)	29 (-63%)	79 (-41%)	135 (-50%)	268 (+332%)
Adults who Completed Summer Reading Program	0	0	30 (-9%)	33 (-72%)	118 (-28%)	165 (+72%)	96 (+60%)
Juvenile Summer Reading Events Held	0	0	96	0	173 (+52%)	114 (+20%)	95 (+7%)
Young Adult Summer Reading Events Held	0	0	25	0	61 (+24%)	49 (-14%)	57 (+97%)
Adult Summer Reading Events Held	0	0	27	0	17 (+467%)	3	0
Attendees at Juvenile Summer Reading Events	0	0	1,798	0	4,186 (+8%)	3,864 (+24%)	3,116 (-20%)
Attendees at Young Adult Summer Reading Events	0	0	181	0	279 (-16%)	333 (-50%)	671 (+127%)
Attendees at Adult Summer Reading Events	0	0	179	0	310 (+265%)	85	0

Summer Reading Program Signups

January 2022

	BDL Monthly Total	BDL YTD	BDL Year End (Year-over-Year Change)				
			2021	2020	2019	2018	2017
Juveniles Signed Up for Summer Reading Program	0	0	407 (+347%)	91 (-87%)	711 (-5%)	747 (-35%)	1,153 (+19%)
Young Adults Signed up for Summer Reading Program	0	0	77 (+166%)	29 (-78%)	134 (-65%)	378 (-2%)	385 (+241%)
Adults Signed Up for Summer Reading Program	0	0	122 (+270%)	33 (-79%)	159 (-36%)	248 (+112%)	117 (+36%)
TOTAL Summer Reading Program Signups	0	0	606 (+296%)	153 (-85%)	1,004 (-27%)	1,373 (-17%)	1,655 (+42%)

Summer Reading Program Completions

January 2022

	BDL Monthly Total	BDL YTD	BDL Year End (Year-over-Year Change)				
			2021	2020	2019	2018	2017
Juveniles who Completed Summer Reading Program	0	0	220 (+142%)	91 (-76%)	385 (+48%)	260 (-50%)	518 (+13%)
Young Adults who Completed Summer Reading Program	0	0	38 (+31%)	29 (-63%)	79 (-41%)	135 (-50%)	268 (+332%)
Adults who Completed Summer Reading Program	0	0	30 (-9%)	33 (-72%)	118 (-28%)	165 (+72%)	96 (+60%)
TOTAL Summer Reading Program Completions	0	0	288 (+88%)	153 (-74%)	582 (+4%)	560 (-37%)	882 (+52%)

Library-Provided Computer Services

January 2022

	BDL Monthly Total	BDL YTD	BDL Year End (Year-over-Year Change)				
			2021	2020	2019	2018	2017
One-hour sessions on Library Wifi	18,500	18,500 (-30%)	290,877 (+2%)	284,892 (-40%)	474,750 (+2%)	465,219 (+9%)	425,714 (+4%)
Desktop, Laptop, and Tablet Computers Available for Public Use	92		92 (+5%)	88	88 (-1%)	89 (+22%)	73
Sessions on Library-Provided Computers	1,107	1,107 (+427%)	11,926 (+24%)	9,604 (-73%)	35,720 (-22%)	45,687 (+3%)	44,181 (+6%)
Hours Library-Provided Computers Used (Tracking Since 2018)	791.76	791.76 (+582%)	6,735.18 (+12%)	6,031.58 (-75%)	24,280.36 (-2%)	24,701.55	0.00
Desktop, Laptop, and Tablet Computers Available for Staff Use	55		55 (+6%)	52	52 (+4%)	50 (+22%)	41

Website Stats

January 2022

	BDL Monthly Total	BDL YTD	BDL Year End (Year-over-Year Change)				
			2021	2020	2019	2018	2017
Monthly Website Sessions	3,622	3,622 (+6%)	46,481 (+12%)	41,586 (-28%)	58,161 (+28%)	45,594 (-38%)	73,326 (-2%)
Monthly Website Page Views	8,120	8,120 (+6%)	116,164 (+26%)	92,094 (-29%)	129,778 (+9%)	118,634 (-33%)	177,799 (-2%)

Faxes, Prints, and Sales

January 2022

	BDL Monthly Total	BDL YTD	BDL Year End (Year-over-Year Change)				
			2021	2020	2019	2018	2017
Fax Pages Received	3	3 (-77%)	141 (-5%)	149 (-57%)	350 (-16%)	419 (+61%)	260 (+19%)
Fax Pages Sent	512	512 (+145%)	6,515 (+66%)	3,935 (-59%)	9,524 (+3%)	9,249 (+138%)	3,879 (+123%)
Free Prints for Job Seekers, Students, etc.	3,007	3,007 (+6,165%)	3,222 (+195%)	1,091 (-61%)	2,796 (-23%)	3,631 (+16%)	3,128 (+9%)
Black and White Patron Prints (Tracking Since 6/2016)	4,623	4,623 (+50%)	55,206 (+66%)	33,177 (-56%)	75,818 (-6%)	81,016 (+7%)	75,606 (+113%)
Color Patron Prints (Tracking Since 6/2016)	4	4 (-98%)	9,731 (+107%)	4,709 (-58%)	11,299 (-8%)	12,285 (+20%)	10,253 (+154%)
Flash Drives Sold (Tracking Since 6/2016)	4	4	16 (-11%)	18 (-51%)	37 (-10%)	41 (-27%)	56 (+4%)
Earbuds Sold (Tracking Since 6/2016)	16	16 (+1,500%)	122 (-7%)	131 (-72%)	462 (-14%)	538 (+29%)	416 (+151%)

Fines and Fees

Overdue Fines Dropped in 2017

January 2022

	BDL Monthly Total	BDL YTD	BDL Year End (Year-over-Year Change)				
			2021	2020	2019	2018	2017
Fines and Fees Payments Received	\$ 208.60	\$ 208.60 (-18%)	\$ 1,409.59 (-18%)	\$ 1,717.01 (-44%)	\$ 3,092.62 (+28%)	\$ 2,412.73 (-68%)	\$ 7,628.31 (-24%)
Outstanding Fines and Fees	\$ 9,401.75		8,576.40 (-84%)	53,362.56 (-4%)	55,588.42 (0%)	55,850.27 (-34%)	84,232.33 (-63%)

Debt Collections

Unique Management Services, Inc.
Tracking Since 2014

January 2022

	BDL Monthly Total	BDL YTD	BDL Year End (Year-over-Year Change)				
			2021	2020	2019	2018	2017
Fine Payments as a Result of Collection Agency's Efforts	\$ 0.00	\$ 0.00	\$ 0.00	\$ 0.00	\$ 268.00 (-94%)	\$ 4,183.45 (+1,727%)	\$ 229.00 (-76%)
Library Materials Returned as a Result of Collection Agency's Efforts	\$ 0.00	\$ 0.00	\$ 0.00	\$ 0.00	\$ 0.00	\$ 462.00 (-48%)	\$ 888.95 (-33%)
What We Paid Collection Agency for Their Services	\$ 0.00	\$ 0.00	\$ 0.00	\$ 0.00	\$ 134.10 (-75%)	\$ 528.66 (-5%)	\$ 558.08 (-45%)

Value to Our Service Area

Visit <https://www.BranchDistrictLibrary.org/value>
to learn how we determine these numbers.

January 2022

	BDL Monthly Total	BDL YTD	BDL Year End (Year-over-Year Change)				
			2021	2020	2019	2018	2017
Value from Physical Item Checkouts	\$ 101,387.70	\$ 101,387.70 (+62%)	\$ 1,048,840.66 (+27%)	\$ 822,979.52 (-53%)	\$ 1,755,554.08 (-7%)	\$ 1,888,907.75 (-12%)	\$ 2,135,671.28 (+0%)
Value from Attending Programs (Tracking Since 1/2018)	\$ 5,068.00	\$ 5,068.00 (+54%)	\$ 78,390.00 (-38%)	\$ 126,690.00 (+7%)	\$ 118,485.00 (-6%)	\$ 125,795.00	\$ 0.00
Value from Fax Service (Tracking Since 1/2018)	\$ 218.00	\$ 218.00	\$ 6,534.00 (+61%)	\$ 4,056.00 (-60%)	\$ 10,205.00 (+6%)	\$ 9,668.00	\$ 0.00
Value from Free Prints (Tracking Since 1/2018)	\$ 308	\$ 308 (+5,017%)	\$ 443 (+173%)	\$ 163 (-61%)	\$ 419 (-23%)	\$ 545	\$ 0
Value from Notary Services (Tracking Since 1/2018)	\$ 15.00	\$ 15.00 (+50%)	\$ 320.00 (+42%)	\$ 225.00 (-53%)	\$ 475.00 (+44%)	\$ 330.00	\$ 0.00
Value from Digital Services (Tracking Since 1/2018)	\$ 12,920.00	\$ 12,920.00 (+30%)	\$ 145,136.00 (+5%)	\$ 138,316.00 (+2%)	\$ 135,824.00 (+7%)	\$ 127,476.00	\$ 0.00
Value from Using Library Computers (Tracking Since 1/2018)	\$ 2,375.28	\$ 2,375.28 (+581%)	\$ 20,205.54 (+12%)	\$ 18,094.74 (-75%)	\$ 72,841.08 (-2%)	\$ 74,104.66	\$ 0.00
Value from Using Library Wifi (Tracking Since 1/2018)	\$ 0.00	\$ 0.00	\$ 17,897.18 (-10%)	\$ 19,942.44 (-40%)	\$ 33,232.50 (+2%)	\$ 32,565.33	\$ 0.00
TOTAL Value of Free Library Services	\$ 122,291.78	\$ 122,291.78 (+56%)	\$ 1,317,766.78 (+17%)	\$ 1,130,466.45 (-47%)	\$ 2,127,036.06 (-6%)	\$ 2,259,391.39 (+6%)	\$ 2,135,671.28 (+0%)

Materials Expenditures

Tracking since 2018

January 2022

	BDL Monthly Total	BDL YTD	BDL Year End (Year-over-Year Change)				
			2021	2020	2019	2018	2017
Amount Spent on Books	\$ 6,173.70	\$ 6,173.70 (-3%)	\$ 108,851.89 (+27%)	\$ 85,727.68 (+12%)	\$ 76,878.30 (-18%)	\$ 93,763.50	\$ 0.00
Amount Spent on Periodicals	\$ 30.00	\$ 30.00 (-94%)	\$ 5,051.01 (-6%)	\$ 5,390.61 (-5%)	\$ 5,663.99 (-20%)	\$ 7,085.59	\$ 0.00
Amount Spent on Audiovisual Materials	\$ 689.21	\$ 689.21 (-36%)	\$ 23,646.40 (+39%)	\$ 16,992.04 (+13%)	\$ 15,009.96 (-17%)	\$ 17,998.47	\$ 0.00
Amount Spent on Digital Resources	\$ 5,052.00	\$ 5,052.00 (+35%)	\$ 42,439.73 (+34%)	\$ 31,708.66 (+12%)	\$ 28,412.62 (-35%)	\$ 43,798.90	\$ 0.00
TOTAL Spent on All Library Materials	\$ 11,944.91	\$ 11,944.91 (+2%)	\$ 179,989.03 (+29%)	\$ 139,818.99 (+11%)	\$ 125,964.87 (-23%)	\$ 162,646.46	\$ 0.00

Other Expenditures

Tracking since 2018

January 2022

	BDL Monthly Total	BDL YTD	BDL Year End (Year-over-Year Change)				
			2021	2020	2019	2018	2017
Total Materials Expenditures	\$ 11,944.91	\$ 11,944.91 (+2%)	\$ 179,989.03 (+29%)	\$ 139,818.99 (+11%)	\$ 125,964.87 (-23%)	\$ 162,646.46	\$ 0.00
Total Staff Expenditures	\$ 69,543.76	\$ 69,543.76 (-4%)	\$ 963,961.23 (+1%)	\$ 956,326.38 (-18%)	\$ 1,172,756.92 (-20%)	\$ 1,469,560.33	\$ 0.00
Expenditures in other categories	\$ 60,660.41	\$ 60,660.41 (+283%)	\$ 860,839.79 (+78%)	\$ 483,894.79 (+37%)	\$ 353,231.25 (-16%)	\$ 422,747.74	\$ 0.00
TOTAL Expenditures in all Categories	\$ 130,204.17	\$ 130,204.17 (+6%)	\$ 1,865,487.82 (+3%)	\$ 1,819,492.24 (+1%)	\$ 1,797,240.67 (-13%)	\$ 2,054,954.53	\$ 0.00

Staffing

January 2022

	BDL Monthly Total	BDL YTD	BDL Year End (Year-over-Year Change)				
			2021	2020	2019	2018	2017
Total BDL Staff	34	34 (avg) (-6%)	35 (avg) (-3%)	36 (avg) (-3%)	37 (avg) (-8%)	40 (avg) (+5%)	37 (avg) (+9%)
BDL Staff with MLS Degree	5	5 (avg)	5 (avg)	5 (avg) (+25%)	5 (avg) (-33%)	6 (avg) (+20%)	5 (avg) (+150%)
Worked Full-Time Equivalents	23.27	23.27 (avg) (-8%)	21.71 (avg) (-13%)	24.53 (avg) (-4%)	25.78 (avg) (-4%)	26.92 (avg) (+8%)	24.91 (avg) (+41%)
Hours of Specialized Training for Staff (Tracking Since 1/2019)	60	60 (-35%)	763 (-35%)	1,170 (+119%)	534	0	0
Hours Volunteers Worked at the Library (Tracking Since 1/2019)	0	0	128 (+228%)	39 (-96%)	1,065	0	0

Outreach Services

Began 2018

January 2022

	BDL Monthly Total	BDL YTD	BDL Year End (Year-over-Year Change)				
			2021	2020	2019	2018	2017
Number of Patrons Served by Outreach Services	14	14 (-7%)	120 (+186%)	42 (-40%)	70 (-8%)	76 (+2,433%)	3
Number of Items Delivered to Outreach Patrons	50	50 (+150%)	548 (+126%)	242 (+10%)	220 (-64%)	606 (+2,231%)	26

Coldwater Branch Heritage Room

Stats part of Coldwater Branch totals above; shown here for convenience.

January 2022

	Heritage Room	BDL YTD	BDL Year End (Year-over-Year Change)				
			2021	2020	2019	2018	2017
Heritage Room Attendance	0	0	202 (+92%)	105 (-78%)	484 (-34%)	736 (+12%)	658 (-7%)
In-Person Reference Questions	0	0	74 (-8%)	80 (-81%)	412 (-42%)	708 (+29%)	550 (+664%)
Reference Telephone Calls	0	0	115 (+92%)	60 (-74%)	232 (-16%)	277 (-36%)	433 (+15%)
Online Reference Questions	0	0	42 (+24%)	34 (-48%)	65 (+8%)	60 (-5%)	63 (-24%)

Coldwater Branch Kids' Place

Stats part of Coldwater Branch totals above; shown here for convenience.
Tracking separately since April 2019.

January 2022

	Kids' Place	BDL YTD	BDL Year End (Year-over-Year Change)				
			2021	2020	2019	2018	2017
Kids' Place Attendance	509	509 (+597%)	4,445 (+86%)	2,385 (-75%)	9,710	0	0
In-Person Reference Questions	108	108 (+671%)	740 (+227%)	226 (-61%)	575	0	0
Reference Telephone Calls	16	16 (+7%)	214 (+37%)	156 (-30%)	224	0	0
Online Reference Questions	0	0	2	0	0	0	0

Coldwater Branch Teen Space

Stats part of Coldwater Branch totals above; shown here for convenience.
Tracking separately since April 2019.

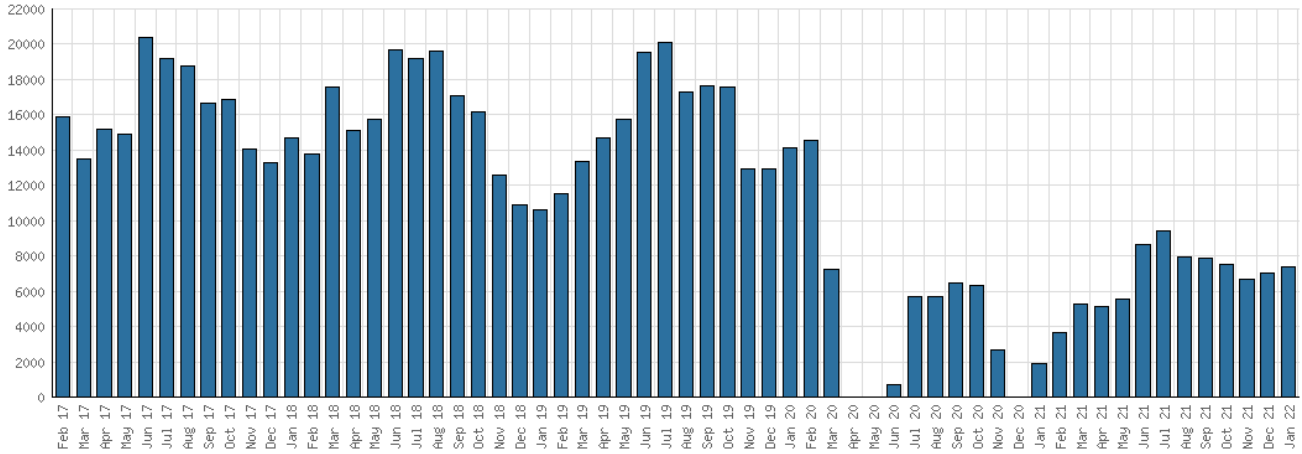
January 2022

	Teen Space	BDL YTD	BDL Year End (Year-over-Year Change)				
			2021	2020	2019	2018	2017
Teen Space Attendance	78	78	706 (-16%)	845 (-80%)	4,172	0	0
In-Person Reference Questions	7	7	13 (+225%)	4 (-96%)	93	0	0
Reference Telephone Calls	0	0	0	0	0	0	0
Online Reference Questions	0	0	0	0	0	0	0

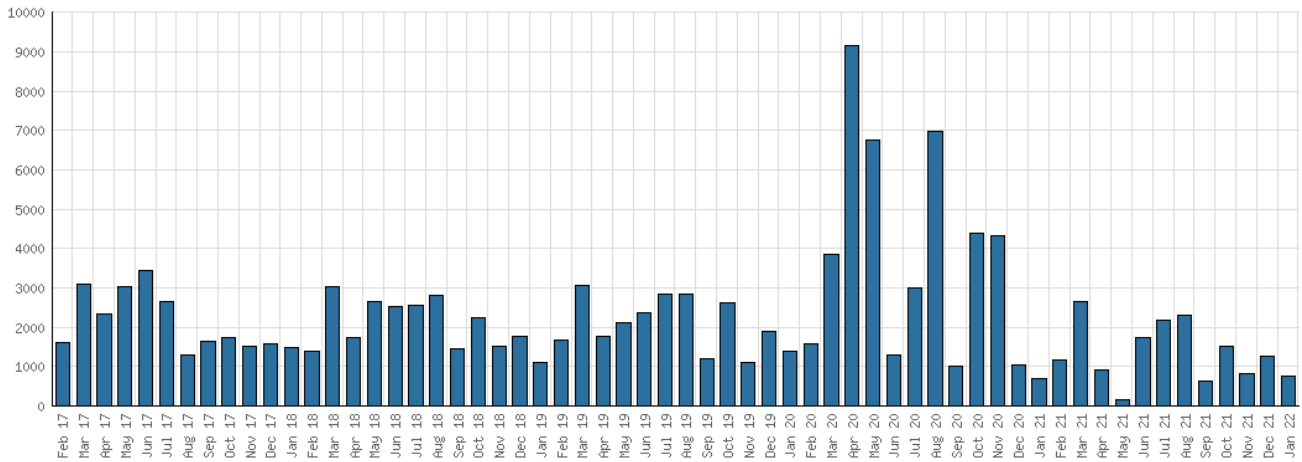
Selected Graphs

5-year Monthly Trends

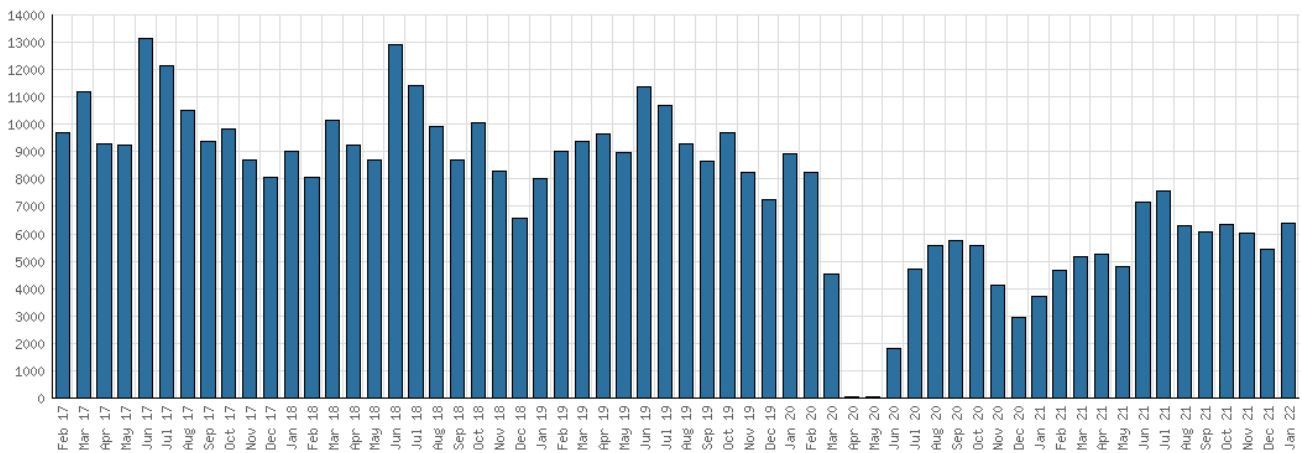
District Attendance



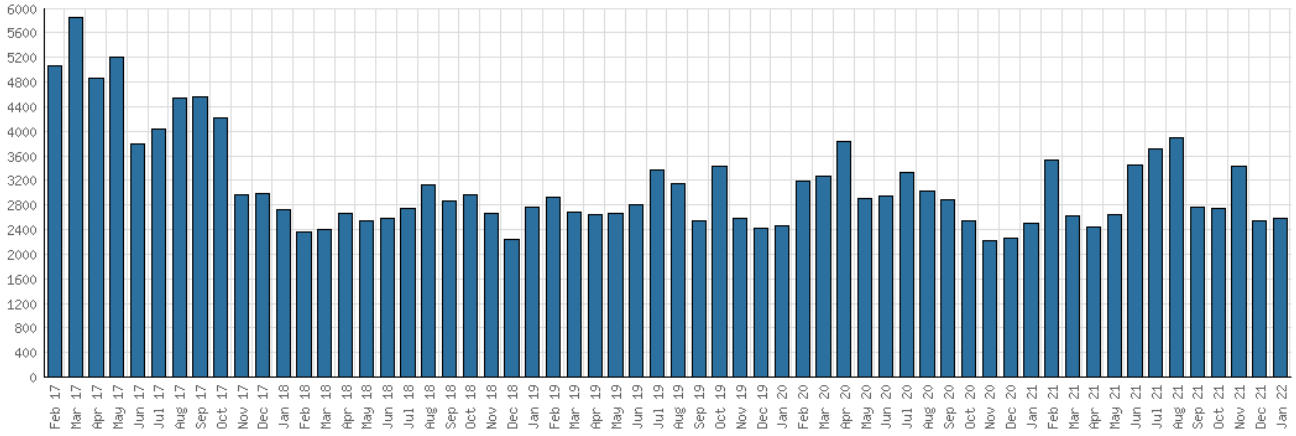
District Program Attendance



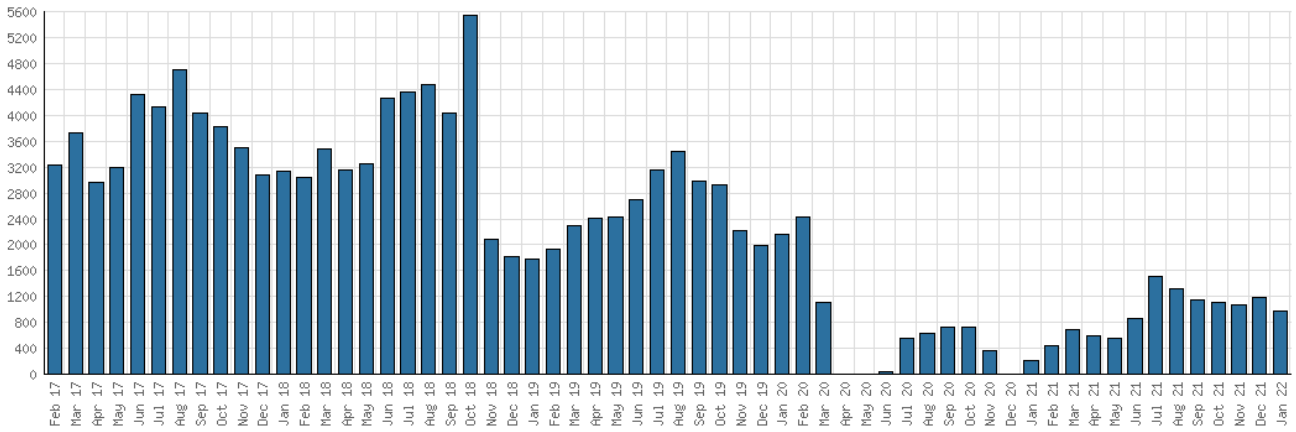
District Physical Checkouts



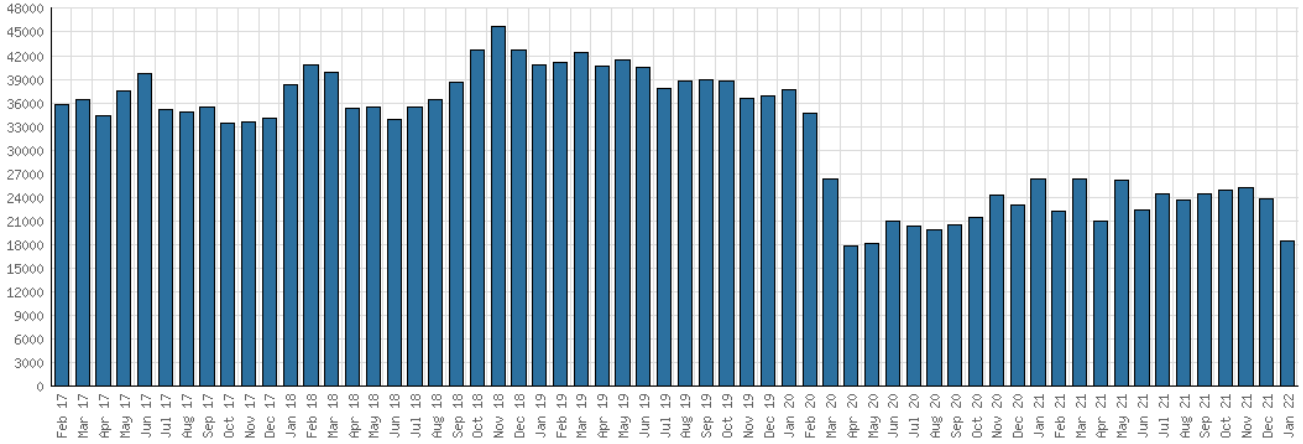
District Digital Usage



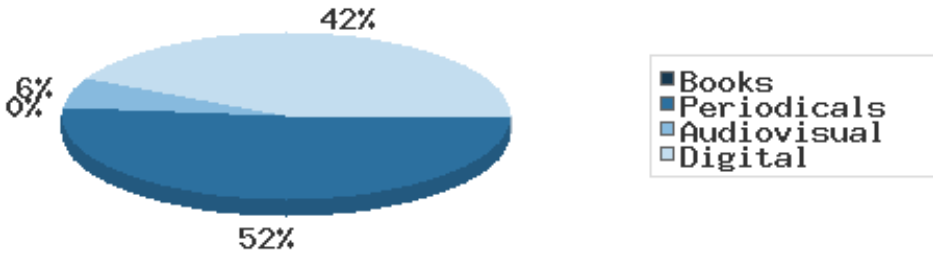
District Use of Library-Provided Computers



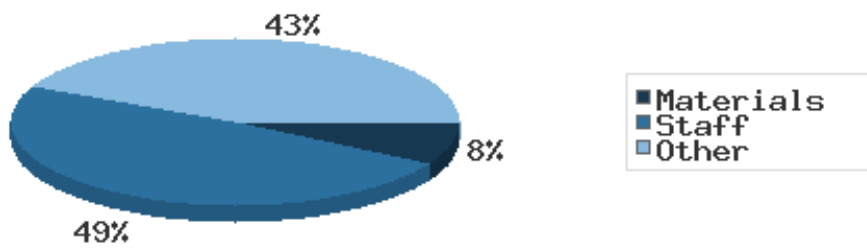
District One-Hour Sessions on Library Wifi



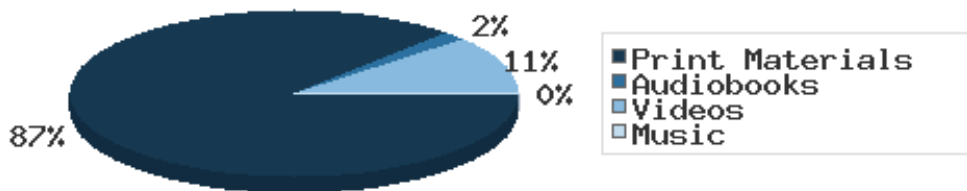
Year-to-Date Materials Expenditures



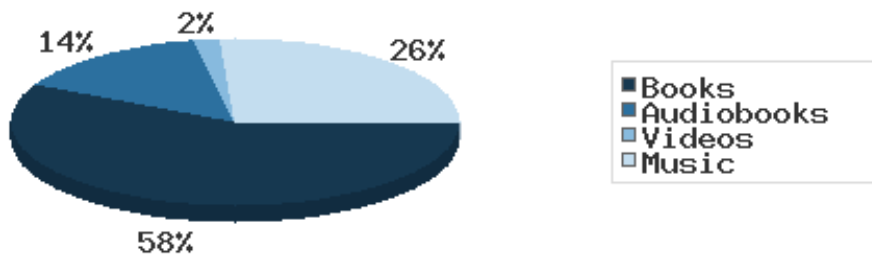
YTD Expenditures in all Categories



Physical Collection



Digital Collection



YTD Usage Breakdown of Digital Services

